




Parts List



Ultra[®] Max II

311363G

3300 psi (228 bar, 22.8 MPa) Maximum Working Pressure

Vac	Model	Lo-Boy	Hi-Boy
240 Europe 	695	255134	249663
	795		249666
	795 Plus		256165
	1095		249667
	Mark V		249905
	Mark V Plus		256166
240 Europe Multi-cord 	695	255135	249668
	795		249671
	1095		249672
	Mark V*		249907
240 Asia	695	255138	249681
	795		249683
	1095		249684
240 Australia/New Zealand (ANZ) 	695	255139	249685
	795	255140	249687
	1095		249688

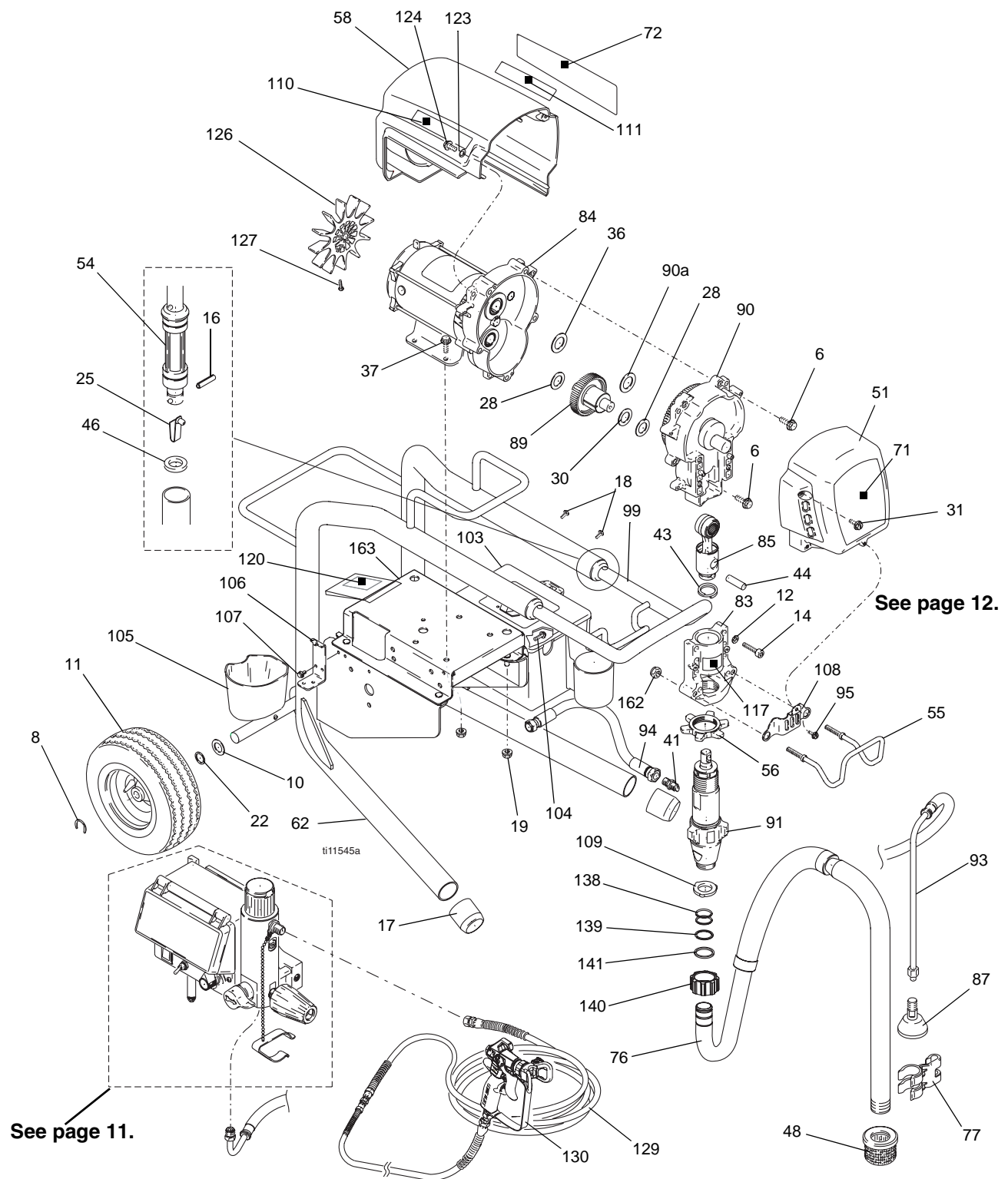
PROVEN QUALITY. LEADING TECHNOLOGY.

Parts List - Sprayer

Ultra Max II 695/795 Lo-Boy:

Ref No.	Part No.	Description	Qty	Ref No.	Part No.	Description	Qty
6	15C753	SCREW, mach, torx, hex	5	90		HOUSING, drive, M1; <i>includes 6, 36, 90a</i>	1
8	15E891	CLIP, retaining	2		287283	695	
10	156306	WASHER, flat	2		287284	795	
11*	119420	WHEEL, pneumatic	2	90a	107089	WASHER, thrust	1
12	106115	WASH, lock, spring	4	91	248204	PUMP, displacement 695; <i>includes 109, Manual 310643</i>	1
14	107210	SCREW, cap, socket hd	4	93	248217	HOSE, drain; <i>includes 87</i>	1
16	101354	PIN, spring, straight	2	94	15D049	HOSE, coupled, 1/4 x 15.75	1
17	15C871	CAP, leg	2	95	114000	SCREW, control housing	1
18	109032	SCREW, mach, pnh	4	99	288448	HANDLE, cart	1
19	110996	NUT, hex, flanged	4	103	287253	TOOL BOX; <i>includes 104</i>	1
22	116038	WASHER, wave spring	2	104	118852	SCREW, machine, hex washer	3
23	110963	SCREW, cap, flng hd	2	105	276975	CUP, drain	1
25	112827	BUTTON, snap	2	106	15F952	BRACKET, drain cup	1
28	114672	WASHER, thrust	2	107	114423	SCREW, mach, hex hd	2
30	114699	WASHER, thrust	1	108	15C859	SHIELD, pump rod	1
31	118444	SCREW, machine, hex washer hd	4	109	115099	WASHER, garden hose	1
36	116191	WASHER, thrust	1	110	15D722	LABEL, premium, left	1
37	100057	SCREW, cap, hex hd	4	111	15D721	LABEL, premium, right	1
41	162453	FITTING, (1/4 NPSM x 1/4 NPT)	1	117	187436	LABEL, torque	1
43	176817	SPRING, retaining	1	123	276980	GROMMET, cover	2
44	176818	PIN, str, hdls	1	124	119250	SCREW, shoulder, hex washer	2
46	183350	WASHER	2	126	15D088	FAN, motor	1
48	189920	STRAINER, (1-11 1/2 NPSM)	1	127	115477	SCREW, mach, torx, pan hd	1
51	287921	COVER, drive, plastic, painted; <i>includes 31, 95</i>	1	128▲	222385	TAG, WARNING (not shown)	1
54	192027	SLEEVE, cart	2	129	240794	HOSE, cpld, 1/4 in. x 60 ft	1
55	15D416	HANGER, pail	1	130		GUN Manual 309639	1
56	192723	NUT, retaining	1		288475	Europe	
58		SHIELD, motor, painted; <i>includes 123, 124</i>	1		246220	ANZ	
	287281	695			288427	Asia	
	287282	795		138	117559	O-RING	2
62	288898	FRAME, cart	1	139	118505	RING, retaining, external	1
71		LABEL, UltraMax II 695/795	1	140	15C980	NUT, jam	1
	15K374	695		141	15C981	WASHER, suction swivel	1
	15D068	795		162	112746	NUT, hex	2
72		LABEL, UltraMax II 695/795	1	163	288899	SHELF, PEM assembly	1
	15K381	695		170▲	243301	LABEL, set, stpro, int'l	1
	15D069	795		172	238358	HOSE, cpld, 3/16 in. x 3 ft	1
76	248216	HOSE, suction; <i>includes 109, 138, 139, 140, 141</i>	1	* 253132 KIT, repair, tube, 11 in.			
77	15D000	CLIP, drain line	1	▲ Extra Danger & Warning tags & labels available free.			
83	240523	HOUSING, bearing; <i>includes 162, 55</i>	1				
84		MOTOR, electric	1				
	287241	695					
	287242	795					
85	241008	ROD, connecting; <i>includes 43</i>	1				
87	241920	DEFLECTOR, threaded	1				
89	287289	GEAR, combination; <i>includes 28, 30</i>	1				

Parts Drawing - Lo-Boy Sprayer



ti7350b1

Parts List - Sprayer

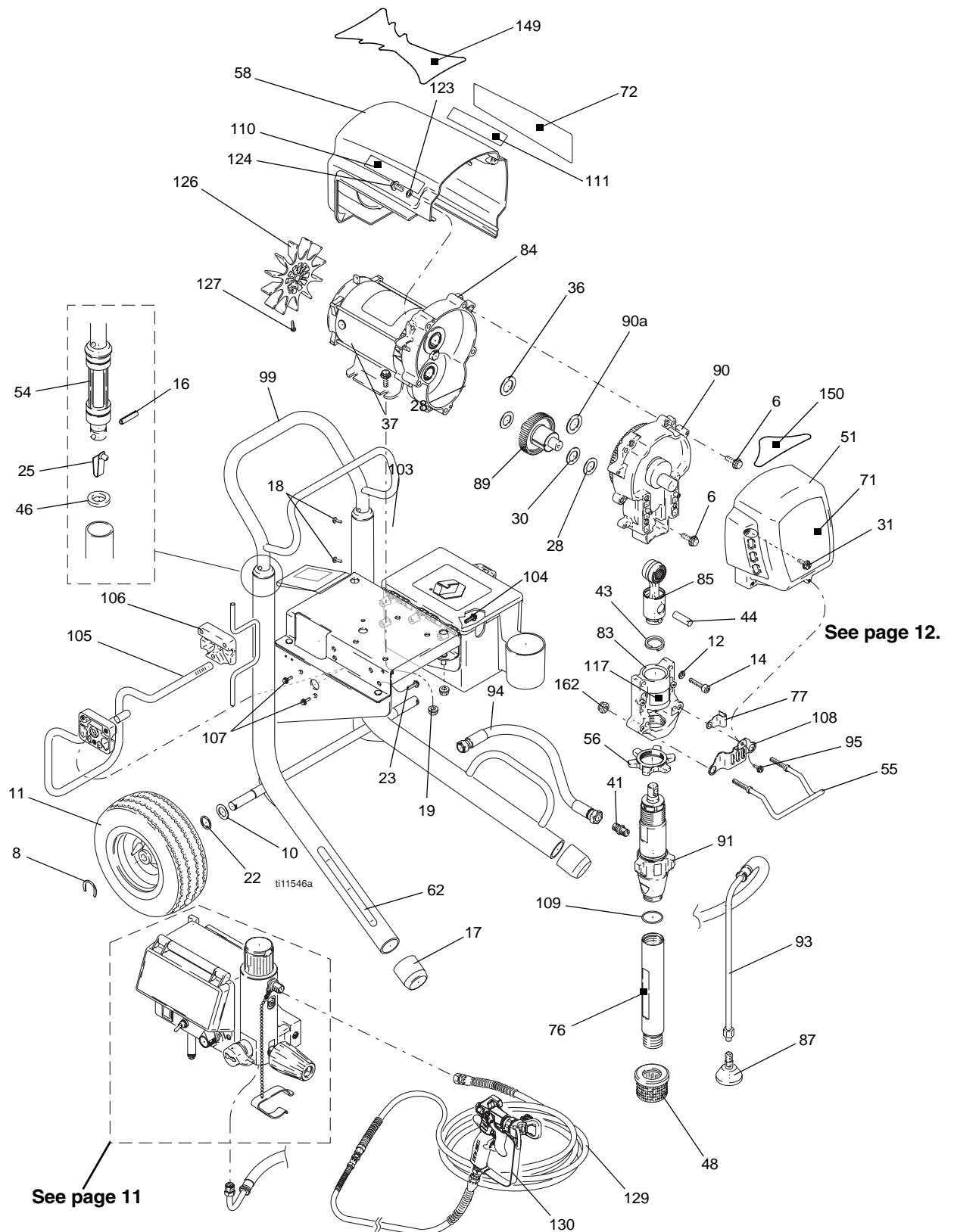
Ultra Max II 695/795 Hi-Boy:

Ref No.	Part No.	Description	Qty	Ref No.	Part No.	Description	Qty
6	15C753	SCREW, mach, torx, hex	5	89	287289	GEAR, combination; <i>includes 28, 30</i>	1
8	15E891	CLIP, retaining	2	90		HOUSING, drive, M1; <i>includes 6, 36, 90a</i>	1
10	156306	WASHER, flat	2		287283	695	
11*	119420	WHEEL, pneumatic	2		287284	795	
12	106115	WASH, lock, spring	4	90a	107089	WASHER, thrust	1
14	107210	SCREW, cap, socket hd	4	91	248204	PUMP, displacement 695/795; <i>includes 109, Manual 310643</i>	1
16	101354	PIN, spring, straight	2	93	244240	HOSE, coupled; <i>includes 87</i>	1
17	15C871	CAP, leg	2	94	15D049	HOSE, coupled, 1/4 x 15.75	1
18	109032	SCREW, mach, pnh	4	95	114000	SCREW, control housing	1
19	110996	NUT, hex, flanged	8	99	245245	HANDLE, cart	1
22	116038	WASHER, wave spring	2	103	287253	TOOLBOX; includes 104	1
23	110963	SCREW, cap, flng hd	2	104	118852	SCREW, hex washer hd	3
25	112827	BUTTON, snap	2	105	15D281	HANGER, stand, cart	1
28	114672	WASHER, thrust	2	106	15C982	CAM, cart	2
30	114699	WASHER, thrust	1	107	114531	SCREW, mach, hex washer	4
31	118444	SCREW, machine, hex washer hd	4	108	15C859	SHIELD, pump rod	1
36	116191	WASHER, thrust	1	109	118494	PACKING, o-ring	1
37	100057	SCREW, cap, hex hd	4	110	15D722	LABEL, premium, left	1
41	162453	FITTING, (1/4 NPSM x 1/4 NPT)	1	111	15D721	LABEL, premium, right	1
43	176817	SPRING, retaining	1	117	187436	LABEL, torque	1
44	176818	PIN, str, hdls	1	123	276980	GROMMET, cover	2
46	183350	WASHER	2	124	119250	SCREW, shoulder, hex, washer	2
48	189920	STRAINER, (1-11 1/2 NPSM)	1	126	15D088	FAN, motor	1
51	287291	COVER, drive, plastic, painted; <i>includes 31, 95</i>	1	127	115477	SCREW, mach, torx, pan, hd	1
54	192027	SLEEVE, cart	2	128▲	222385	TAG, WARNING (not shown)	1
55	192719	HANGER, pail	1	129	240794	HOSE, cpld, 1/4 in. x 50 ft	1
56	192723	NUT, retaining	1	130		GUN (Manual 309639)	1
58		SHIELD, motor, painted; <i>includes 123, 124</i>	1		288475	Europe	
	287281	695			246220	ANZ	
	287282	795			288427	Asia	
62	288605	FRAME, cart	1	149	15T569	LABEL, shroud top	1
71		LABEL, UltraMax II 695/795	1	150	15T570	LABEL, crown	1
	15K374	695		162	112746	NUT, hex	2
	15D068	795		163	288899	SHELF, PEM, assy	1
	15T428	795 Plus	1	170▲	243301	LABEL, set, stpro, int'l	1
72		LABEL, UltraMax II 695/795	1	172	238358	HOSE, cpld, 3/16 in. x 3 ft	1
	15K381	695					
	15D069	795					
	15T429	795 Plus					
76	248214	TUBE, intake; <i>includes 109</i>	1				
77	197124	CLIP, spring	1				
83	240523	HOUSING, bearing; <i>includes 55, 162</i>	1				
84		MOTOR, electric	1				
	287241	695					
	287242	795					
85	241008	ROD, connecting; <i>includes 43</i>	1				
87	241920	DEFLECTOR, threaded	1				

* 253132 KIT, repair, tube, 11 in.

▲ Extra Danger & Warning tags & labels available free.

Parts Drawing - Sprayer



Parts List - Sprayer

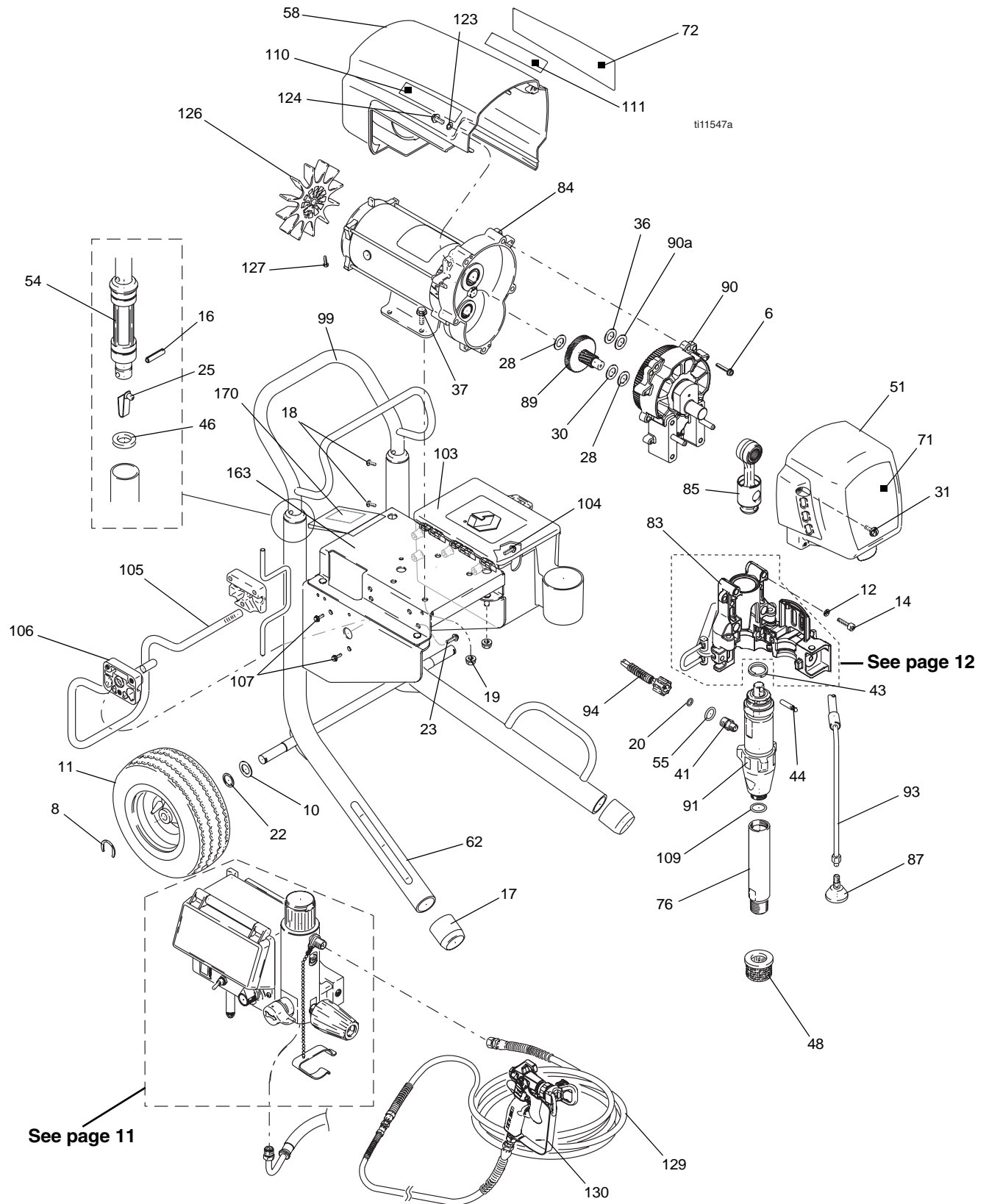
Ultra Max II: 1095

Ref No.	Part No.	Description	Qty	Ref No.	Part No.	Description	Qty
6	15C753	SCREW, mach, torx, hex	5	89	287290	GEAR, combination; <i>includes 28, 30</i>	1
8	15E891	CLIP, retaining	2	90	287295	HOUSING, drive, M1; <i>includes 6, 36, 90a</i>	1
10	156306	WASHER, flat	2	90a	114671	WASHER, thrust	1
11*	119509	WHEEL, pneumatic	2	91	287513	PUMP, displacement; <i>includes 41, 76, 109, Manual 310894</i>	1
12	106115	WASH, lock, spring	4	93	287952	HOSE, drain; <i>includes 87</i>	1
14	114666	SCREW, cap, socket hd	4	94	287803	HOSE, coupled	1
16	101354	PIN, spring, straight	2	99	245245	HANDLE, cart	1
17	276974	CAP, leg	2	103	287253	TOOLBOX; <i>includes 104</i>	1
18	108795	SCREW, mach, pnh	4	104	118852	SCREW, hex washer hd	3
19	110996	NUT, hex, flanged	8	105	15C858	HANGER, stand, cart	1
22	116038	WASHER, wave spring	2	106	15C982	CAM, cart	2
23	110963	SCREW, cap, flng hd	2	107	114531	SCREW, mach, hex washer	4
25	112827	BUTTON, snap	2	109	118494	PACKING, o-ring	1
28	114672	WASHER, thrust	2	110	15D722	LABEL, premium, left	1
30	114699	WASHER, thrust	1	111	15D721	LABEL, premium, right	1
31	118444	SCREW, machine, hex washer hd	4	123	276980	GROMMET, cover	2
36	116192	WASHER, thrust	1	124	119250	SCREW, shoulder, hex, washer	2
37	100057	SCREW, cap, hex hd	4	126	15D088	FAN, motor	1
41	15E802	FITTING, pump, quick disc	1	127	115477	SCREW, mach, torx, pan, hd	1
43	119778	SPRING, retaining	1	128▲	222385	TAG, WARNING (not shown)	1
44	15F110	PIN, pump	1	129	240794	HOSE, cpld, 1/4 in. x 50 ft	1
46	183350	WASHER	2	130		GUN Manual 309639	1
48	189920	STRAINER, (1-11 1/2 NPSM)	1		288475	Europe	
51	287292	COVER, drive, plastic, painted; <i>includes 31</i>	1		246220	ANZ	
54	187604	SLEEVE, cart	2		288427	Asia	
55	119790	PACKING, o-ring	1	163	288899	SHELF, PEM, assy	1
58	287282	SHIELD, motor, painted; <i>includes 123, 124</i>	1	170▲	243301	LABEL, set, stpro, int'l	1
62	288663	FRAME, cart 1095	1	172	238358	HOSE, cpld, 3/16 in. x 3 ft	1
71	15D071	LABEL, UltraMax II 1095	1				
72	15D072	LABEL, UltraMax II 1095	1				
76	248215	TUBE, intake; <i>includes 109</i>	1				
83	287933	HOUSING, bearing	1				
84	287243	MOTOR, electric; <i>includes 126, 127</i>	1				
85	287472	ROD, connecting; <i>includes 43, 44</i>	1				
87	241920	DEFLECTOR, threaded	1				

* 253131 KIT, repair, tube, 13 in.

▲ Extra Danger & Warning tags & labels available free.

Parts Drawing - Sprayer



Parts List - Sprayer

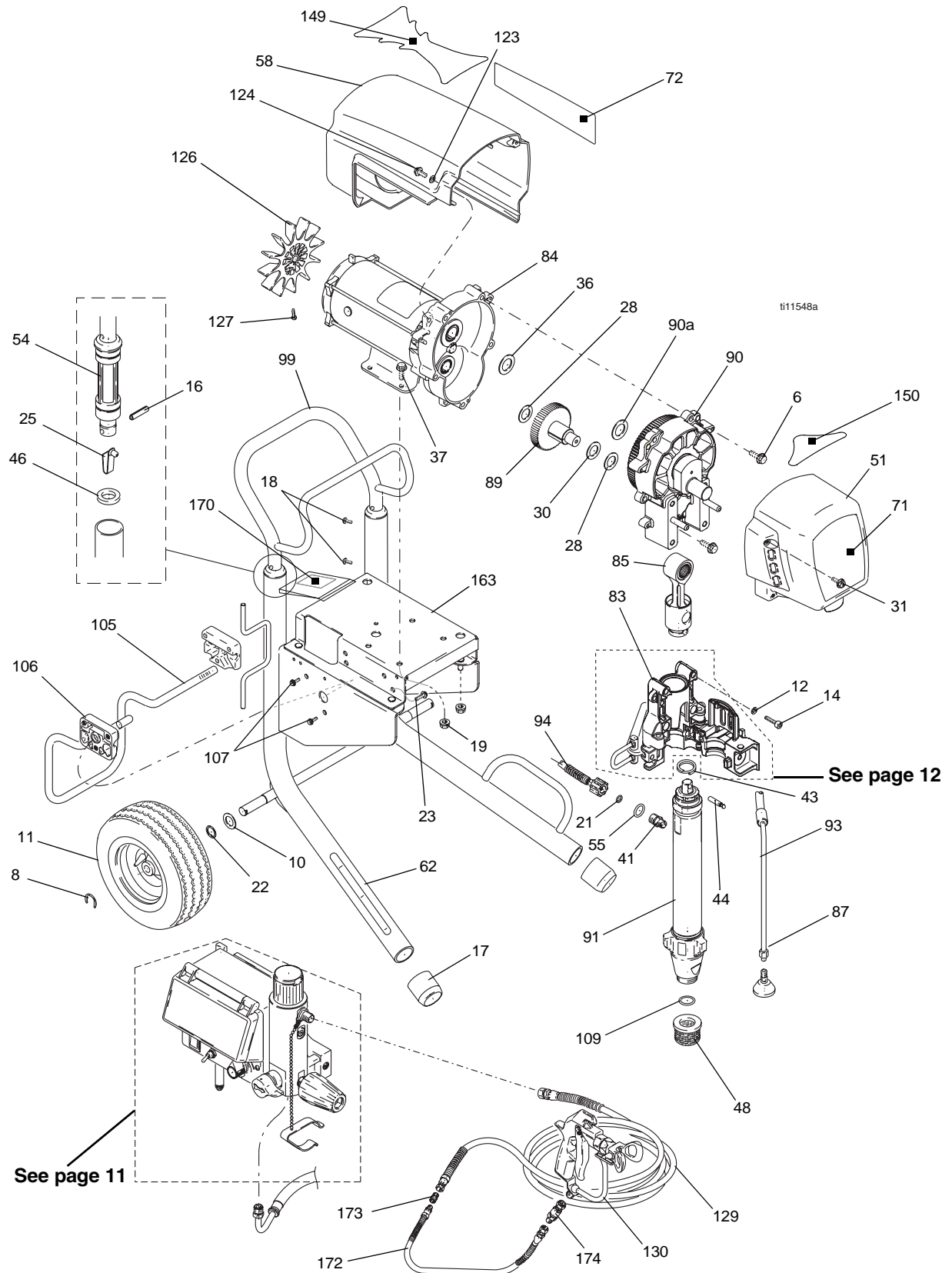
Ultra Max II: Mark V

Ref No.	Part No.	Description	Qty	Ref No.	Part No.	Description	Qty
6	15C753	SCREW, mach, torx, hex	5	85	287472	ROD, connecting; <i>includes 43, 44</i>	1
8	15E891	CLIP, retaining	2	87	241920	DEFLECTOR, threaded	1
10	156306	WASHER, flat	2	89	287290	GEAR, combination; <i>includes 28, 30</i>	1
11*	119509	WHEEL, pneumatic	2	90	287295	HOUSING, drive, M1; <i>includes 6, 36, 90a</i>	1
12	106115	WASH, lock, spring	4	90a	114671	WASHER, thrust	1
14	114666	SCREW, cap, socket hd	4	91	287928	PUMP, displacement; <i>includes 41, 109, Manual 310894</i>	1
16	101354	PIN, spring, straight	2	93	287952	HOSE, drain; <i>includes 87</i>	1
17	276974	CAP, leg	2	94	288658	HOSE, coupled	1
18	108795	SCREW, mach, pnh	4	99	245245	HANDLE, cart	1
19	110996	NUT, hex, flanged	8	103	287253	TOOLBOX; <i>includes 104</i>	1
21	109450	O-RING	1	104	118852	SCREW, hex washer hd	3
22	116038	WASHER, wave spring	2	105	15C858	HANGER, stand, cart	1
23	110963	SCREW, cap, flng hd	2	106	15C982	CAM, cart	2
25	112827	BUTTON, snap	2	107	114531	SCREW, mach, hex washer	4
28	114672	WASHER, thrust	2	123	276980	GROMMET, cover	2
30	114699	WASHER, thrust	1	124	119250	SCREW, shoulder, hex, washer	2
31	118444	SCREW, machine, hex washer hd	4	126	15D088	FAN, motor	1
36	116192	WASHER, thrust	1	127	115477	SCREW, mach, torx, pan, hd	1
37	100057	SCREW, cap, hex hd	4	128▲	222385	TAG, WARNING (not shown)	1
41	15G880	FITTING, pump, quick disc	1	129	240797	HOSE, cpld, 3/8 in. x 50 ft	1
43	119778	SPRING, retaining	1	130	241705	GUN, spray, texture	1
44	15F110	PIN, pump	1	149	15T569	LABEL, shroud top	1
46	183350	WASHER	2	150	15T570	LABEL, crown	1
48	189920	STRAINER, (1-11 1/2 NPSM)	1	163	288899	SHELF, PEM, assy	1
51	287292	COVER, drive, plastic, painted; <i>includes 31</i>	1	170▲	243301	LABEL, set, stpro, int'l	1
54	187604	SLEEVE, cart	2	172	241735	HOSE, cpld, 1/4 in. x 3 ft	1
55	C20195	PACKING, o-ring	1	173	159841	ADAPTER, 1/4 npt (f) x 3/8 npt (m)	1
58	287282	SHIELD, motor, painted; <i>includes 123, 124</i>	1	174	189018	SWIVEL, 1/4 npsm (f) x 1/4 npsm (m)	1
62	288663	FRAME, cart	1				
71	15F117	LABEL, Mark V	1				
	15T430	LABEL, Mark V Plus	1				
72	15F118	LABEL, Mark V	1				
	15T431	LABEL, Mark V Plus	1				
83	287933	HOUSING, bearing	1				
84	287243	MOTOR, electric; <i>includes 126, 127</i>	1				

* 253131 KIT, repair, tube, 13 in.

▲ Extra Danger & Warning tags & labels available free.

Parts Drawing - Sprayer



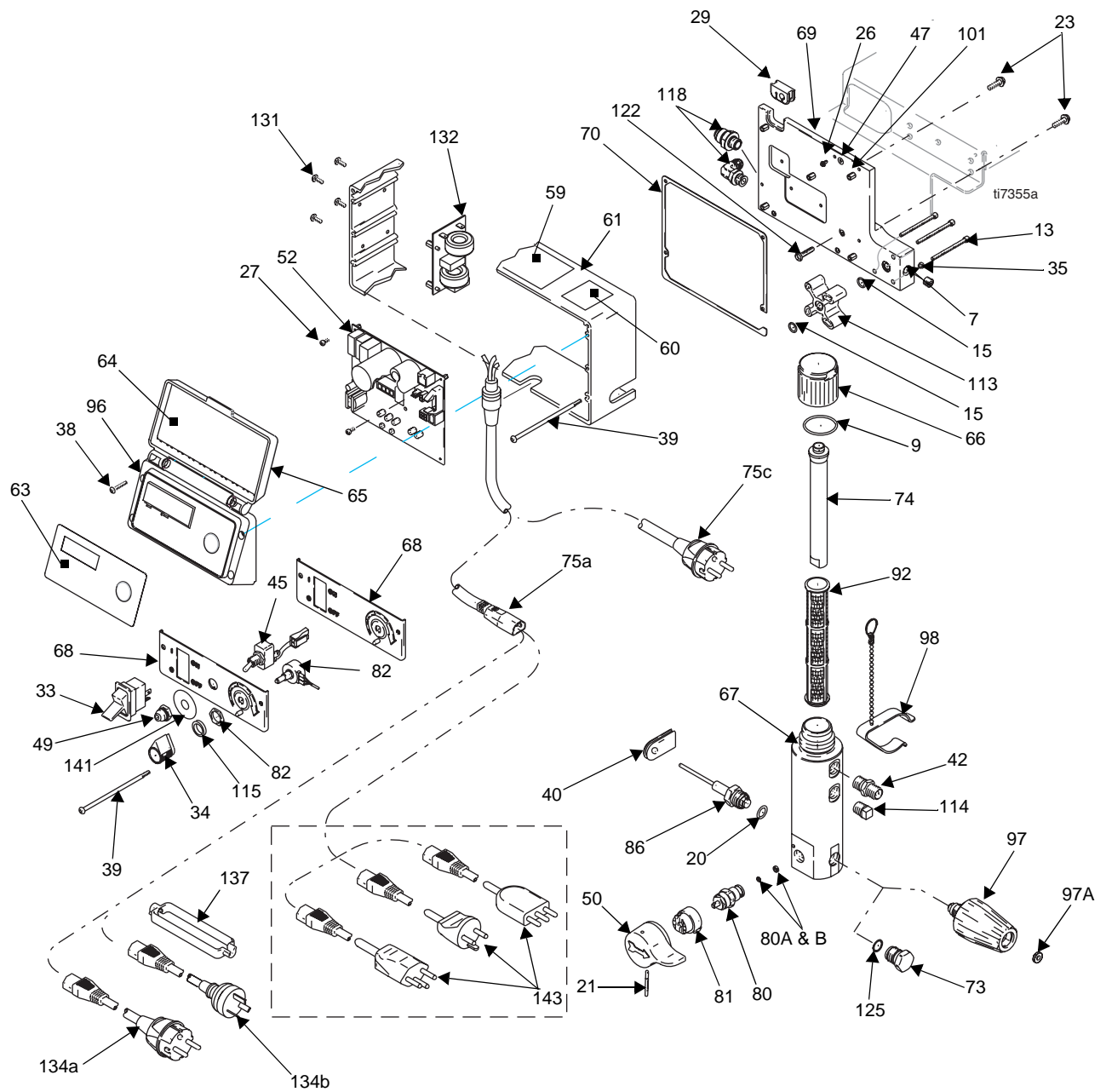
Parts List - Sprayer

Ultra Max II: 695/795/1095/Mark V

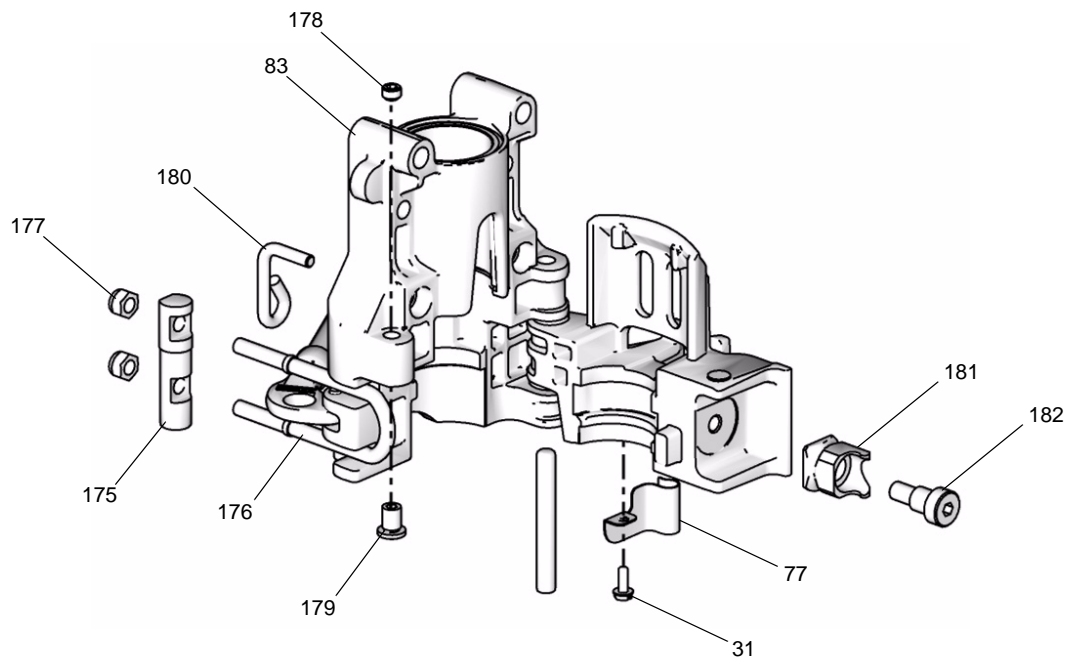
Ref No.	Part No.	Description	Qty	Ref No.	Part No.	Description	Qty
7	100721	PLUG, pipe	1	75c	15D528	Europe CEE/7	
9	117285	PACKING, o-ring	1	80	235014	VALVE, prime; <i>includes 80a, 80b</i>	1
13	C19817	SCREW, cap, socket	3	80a	111699	GASKET, seat, valve	
15	107505	PACKING, o-ring	2	80b	15E022	SEAT, valve	
20	111457	PACKING, o-ring	2	81	224807	BASE, valve	1
21	15C972	PIN, grooved	1	82	256219	POTENTIOMETER, adjustment	1
23	110963	SCREW, cap, flng	2	86	243222	TRANSDUCER, pressure control; <i>includes 20</i>	1
26	114391	SCREW, grounding	1				
27	113045	SCREW, sems, mach, phillips	5	92		FILTER, fluid	1
29	15D087	GROMMET	1		244071	30 mesh	
33	15D527	SWITCH, rocker	1		244067	60 mesh, original equipment	
34	116167	KNOB, potentiometer	1		244068	100 mesh	
35	105510	WASHER, lock, spring	3		244069	200 mesh	
38	116252	SCREW, #10 taptite phillips	4	96	287286	COVER, control, ultra; <i>includes 38, 63, 64, 65</i>	1
39	112381	SCREW, mach, pan hd	4				
40	15D033	GROMMET, transducer	1	97	287293	VALVE, Autoclean; <i>includes 97a</i>	1
42		NIPPLE, adapter	1				
	164672	695, 795, 1095		97a	15F950	GASKET	1
	162485	Mark V		98	244346	KIT, repair, clamp, trigger	1
45	119541	SWITCH, toggle	1	101	15D160	STUD, board	5
47	186620	LABEL, symbol, ground	1	102	114420	SCREW, mach, pmh, sems	1
49	195428	BOOT, toggle	1	113	15F844	SPACER, manifold	1
50	15C780	HANDLE	1	114	104813	PLUG, pipe	1
52	287942	CONTROL, board; <i>includes 27, 102</i>	1	115	15C973	GASKET	1
59▲	243301	LABEL, warning	1	118	120185	FITTING, hydraulic; Mark V	1
60▲	195793	LABEL, warning	1		116793	FITTING, elbow, hydraulic; 695, 795, 1095	
61	15D431	BOX, control	1				
63	198648	LABEL, LCD	1	122	115478	SCREW, mach torx/slt	1
64	15D063	LABEL, instruction	1	125	15D541	SEAL, washer	1
65	15D609	LABEL, ctrl, box cover	1	131	119228	SCREW, mach flat hd	4
66	287285	CAP, filter; <i>includes 9, 74</i>	1	132	248220	FILTER, board	1
67	15C838	BASE, filter	1	134		CORD SET, ADAPTER	1
68		PANEL, control	1	134a	242001	Europe Multicord and Asia	1
	15G627	695, 795, 1095		134b	242005	ANZ	
	15C947	Mark V		137	195551	RETAINER, PLUG, ADAPTER, Europe Multicord, Asia & ANZ	1
69	15C840	PLATE, power bar	1				
70	15D036	GASKET, control box	1	141▲	15G769	LABEL	1
73	248314	PLUG, Autoclean standard; <i>includes 125</i>	1	143	287121	CORD SET, Italy, Denmark, Switzerland	1
74	15C766	TUBE, diffusion	1				
75		CORD, power	1				
75a	15D529	Europe Multicord, Asia & ANZ					

▲ Extra Danger and Warning tags and labels available free.

Parts Drawing - Sprayer



Parts Drawing - Bearing Housing



Parts List - Bearing Housing

Ref No.	Part No.	Description	Qty	Ref No.	Part No.	Description	Qty
83	240523	HOUSING, bearing (695/795)	1	178	15F503	SCREW, set, socket hd	1
	287923	HOUSING, bearing (1095/Mark V)	1	179	15F498	SCREW, adjustment	1
31	118444	SCREW, mach hex wash hd	1	180	15F116	LATCH	1
77	15E975	CLIP, spring	1	181	15G840	RECEIVER, latch (695)	1
175		PIN, housing, bearing			15G584	RECEIVER, latch (795/1095/Mark V)	1
	15E779	695	1	182	108859	SCREW, shoulder, sch (695)	1
	15E625	795/1095/Mark V	1		116942	SCREW, shoulder, sch (795/1095/Mark V)	1
176		LATCH, housing, bearing					
	15G930	695	1				
	15G890	795/1095/Mark V	1				
177		NUT, lock hex					
	102040	695	2				
	111040	795/1095/Mark V	2				