

GHTM 130, GH 200, GH 230, GH 300 Hydraulic Sprayers

311797G

- Use with Architectural Coatings and Paints -

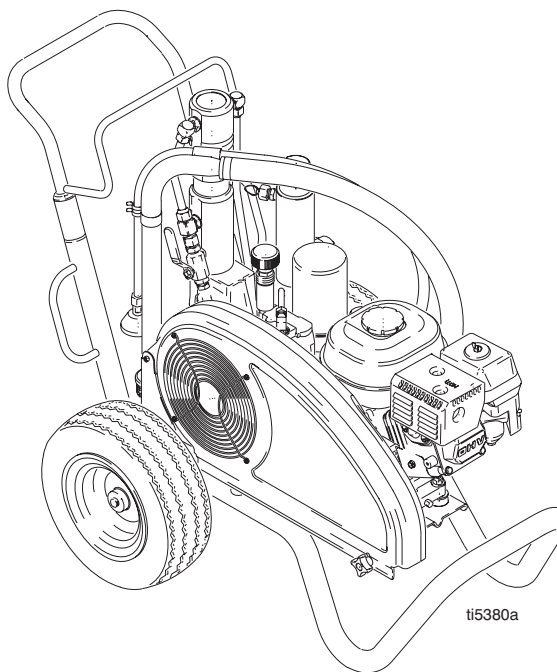
3300 psi (2.8 MPa, 228 bar) Maximum Working Pressure

List of models provided on page 2.



Important Safety Instructions.

Read all warnings and instructions in this manual. Save these instructions. Contact Graco Customer Service, your local Graco distributor or our website: www.graco.com, to obtain a manual in your language.



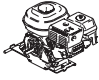
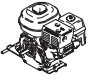
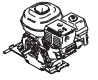
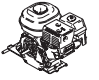
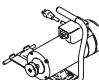
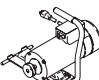

English

PROVEN QUALITY. LEADING TECHNOLOGY.

Graco Inc. P.O. Box 1441 Minneapolis, MN 55440-1441
Copyright 2007, Graco Inc. is registered to I.S. EN ISO 9001



Models

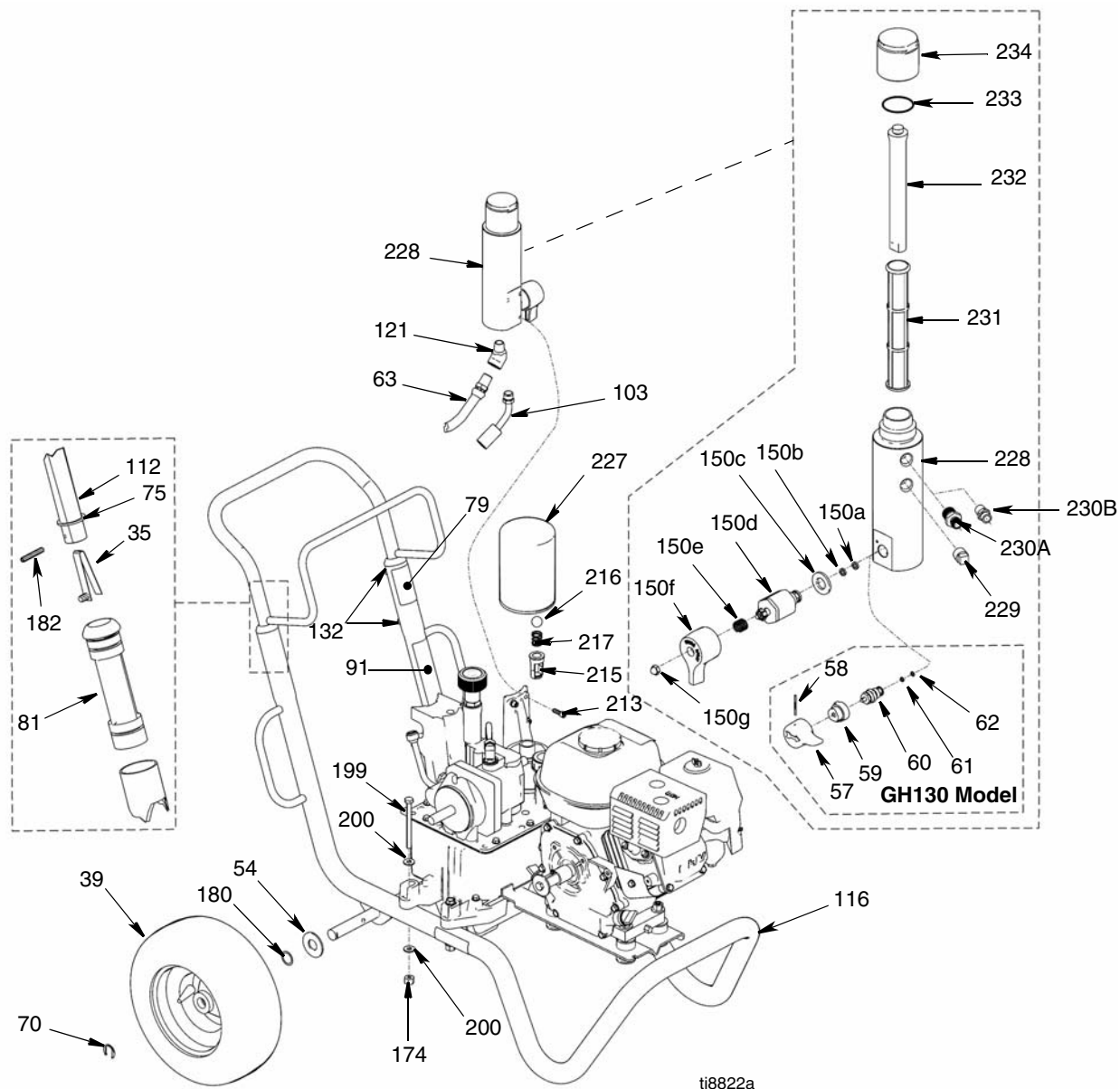
	 GH130	 GH200	 GH230	 GH300	 120 Vac 60 Hz	 ETL/CSA/UL 120 Vac 60 Hz	
253709	✓						
253957	✓						✓
253959	✓				✓		
253980	✓					✓	
253960		✓					
253962		✓					✓
253963		✓			✓		
253981		✓				✓	
255095		✓					✓
253964			✓				
253965			✓				✓
253966			✓		✓		
253982			✓			✓	
253967				✓			
253968				✓			✓

Electric Motor Kit Options

Kit Number	Sprayer Model	Description
288474	GH130	120VAC, 60Hz, 20A, CAS/UL approved
288473	GH130	120VAC, 60Hz, 15A
248950	GH200/GH230	120VAC, 60Hz, 20A, CSA/UL approved
248949	GH200/GH230	120 VAC, 60Hz, 15A
248946	EH200/HD1200	240VAC, 50Hz, 13.4A

Parts

All Sprayers



ti8822a

Parts List - All Sprayers

Ref	Part	Description	Qty	Ref	Part	Description	Qty
35	112827	BUTTON, snap	2	150e★	114708	SPRING, compression	1
39	119420	WHEEL, pneumatic, GH130 & 200	2	150f★	15G563	HANDLE, valve	1
	119408	WHEEL, pneumatic, GH230 & 300	2	150g★	116424	NUT, cap, hex hd	1
54	156306	WASHER, flat, GH130 & 200	2	174	110838	NUT, hex	2
	111841	WASHER, plain, 5/8, GH230 & 300	2	180	116038	WASHER, wave spring, GH130 & 200	2
57	15C780	HANDLE, GH130	1	182	101354	PIN, spring, straight, GH130 & 200	2
58	15C972	PIN, grooved, GH130	1		108068	PIN, spring, straight, GH230 & 300	2
59	224807	BASE, valve, GH130	1	199	803298	SCREW, flat head	2
60	235014	VALVE, replacement, kit, GH130	1	200	100527	WASHER	4
61◆	15E022	SEAT, valve, GH130	1	213	119426	SCREW	3
62◆	111699	GASKET, seat, valve, GH130	1	215	198841	RETAINER	1
63	243814	HOSE	1	216	100084	BALL, metallic	1
70	120211	CLIP, retaining, GH130 & 200	2	217	116967	SPRING, compression	1
	15B563	CLIP, retaining, GH230 & 300	2	227	246173	FILTER, oil, spin on	1
75	15J645	WASHER, GH130 & 200	2	228	15E599	HOUSING	1
	183350	WASHER, GH230, & 300	2	229	100040	PLUG, pipe	1
79▲	189246	LABEL	1	230A	164672	ADAPTER (GH 130, 200) 1/4 npsm (m) hose connection	1
81	192027	SLEEVE, cart	2	230B	162485	ADAPTER (GH 230, 300) 3/8 npsm (m) hose connection	1
91▲	194317	LABEL	1	231	244067	FILTER, fluid	1
103	288732	HOSE, drain	1	232	15C766	TUBE, diffusion	1
112	248818	HANDLE, cart	1	233	117285	PACKING, o-ring	1
116	288169	FRAME, cart, GH130 & 200	1	234	15C765	CAP, filter	1
	248815	CART, frame, GH230 & 300	1				
121	116756	ELBOW	1				
132	109032	SCREW, mach, pnh	4				
150	245103	VALVE, drain, GH200, 230, 300	1				
150a★	193710	SEAL, valve	1				
150b★	193709	SEAT, valve	1				
150c★	114797	GASKET	1				
150d★		VALVE, assembly	1				

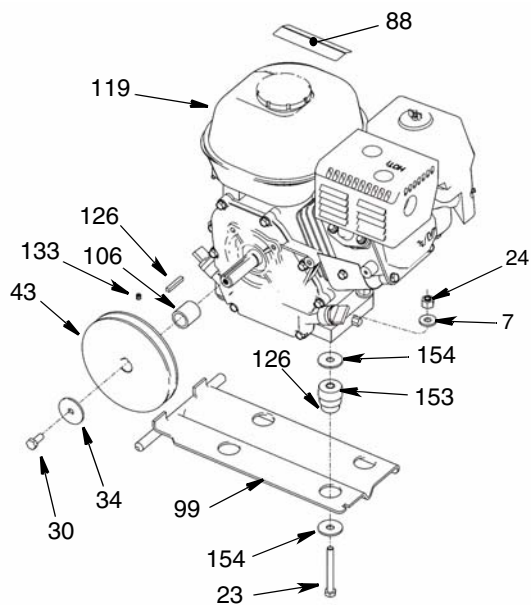
▲ *Danger and Warning labels, are available at no cost.*

◆ *Included in Drain Valve Replacement Kit 235014*

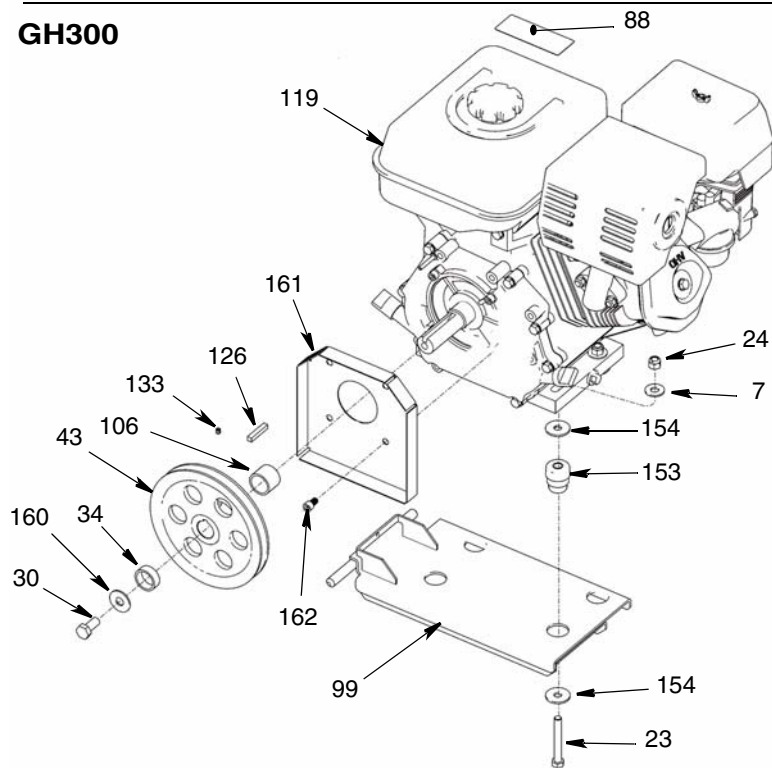
★ *Included in Drain Valve Replacement Kit 245103*

Parts Drawing - Engines

GH130, 200, 230



GH300



ti8813a

Ref	Part	Description	Qty
7	100023	WASHER,flat, GH130, 200 & 230	4
	100132	WASHER, flat, GH300	4
23	113664	SCREW,cap,hex hd, GH130, 200 & 230	4
	106212	SCHREW, cap, hex hd, GH300	4
24	110838	NUT,lock, GH130, 200 & 230	4
	101566	NUT, lock, GH300	4
30	108842	SCREW,cap,hex hd, GH130, 200 & 230	1
	116645	SCREW, cap, hex hd, GH300	1
34	112717	WASHER,GH130, 200 & 230	1
	119438	WASHER, GH300	1
43	116908	PULLEY,5.50 in, GH130, 200 & 230	1
	119401	PULLEY, GH300	1
88▲	194126	LABEL	1
99	15F157	BRACKET,mounting, engine, GH130, 200 & 230	1
	15E583	BRACKET, mounting, engine, GH300	1
106	15B314	SLEEVE,motor shaft, GH130, 200 & 230	1
	15E586	SLEEVE, motor shaft, GH300	1
119*	120590	ENGINE, gasoline, 4.0hp, Honda, GH130	1
	802264	ENGINE,gasoline, 5.5hp GH200	1

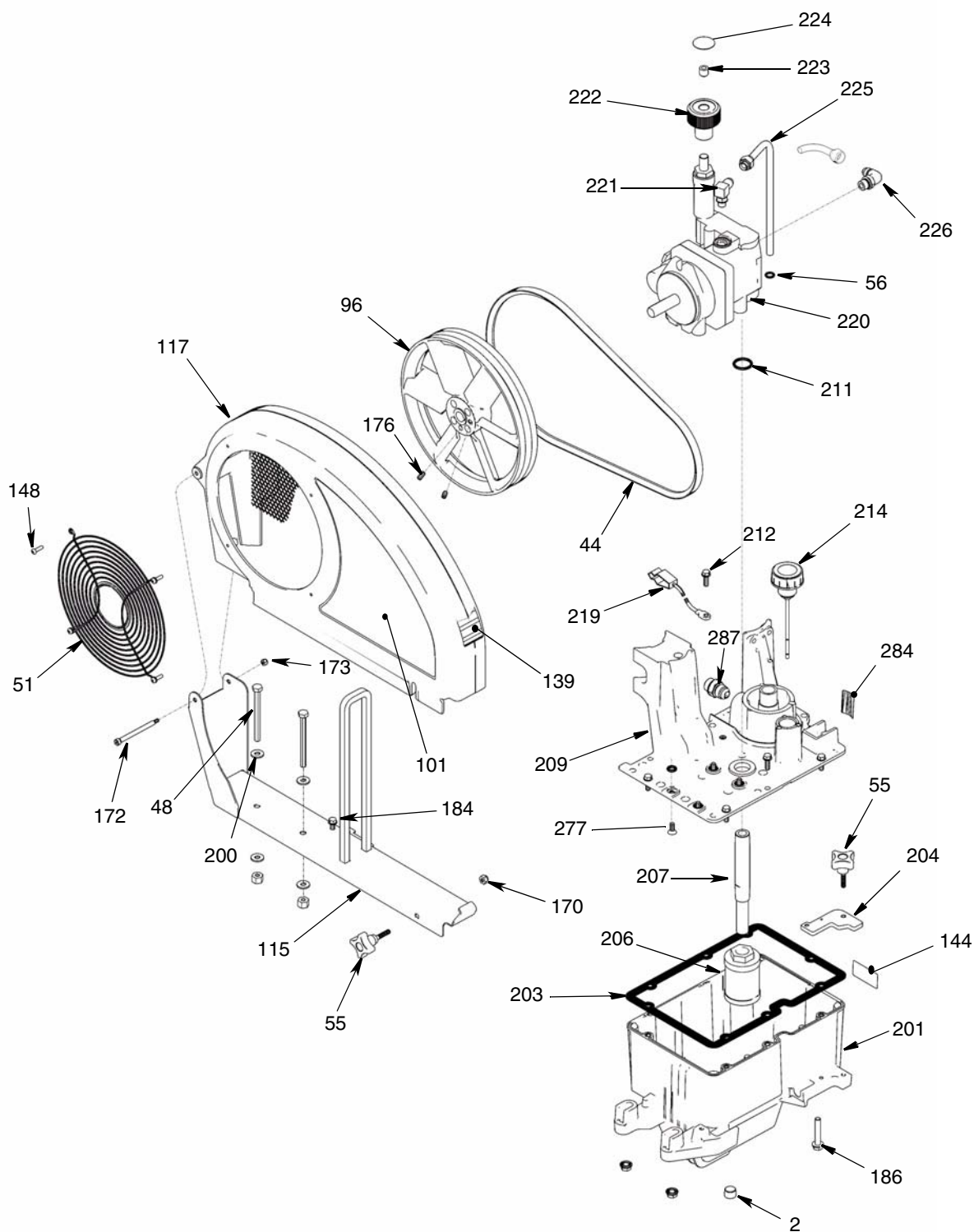
Ref	Part	Description	Qty
	116298	ENGINE, gasoline, 6.5hp, Honda, GH230	1
	803900	ENGINE, gasoline, 9.0hp Honda, GH300	1
126	117632	KEY,square,3/16 X 1.25, GH130, 200 & 230	1
	119484	KEY, parallel, square, GH300	1
133	100002	SCREW,set,sch	1
153	15E888	DAMPENER,motor mount, GH130, 200 & 230	4
	195515	DAMPENER, motor mount, GH300	4
154	108851	WASHER,plain	8
160	15E764	SPACER, GH300	1
161	15E973	SHIELD, GH300	1
162	C20010	SCREW, GH300	5

**Engine Repair Kits:*

288678	4.0 HP
248943	5.5 HP
248944	6.5 HP
248945	9.0 HP

▲*Danger and Warning labels, are available at no cost.*

Parts Drawing - All Sprayers



ti8823b

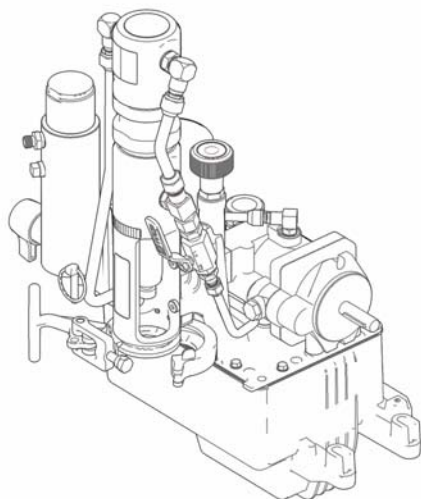
Parts List - All Sprayers

Ref	Part	Description	Qty				
2	101754	PLUG	1	176	120087	SCREW, set, 1/4 X 1/2	2
44	119433	BELT, GH130, 200, 230	1	184	260212	SCREW, hex washer hd, thd form	1
	119432	BELT, GH300	1	186	120655	SCREW, mach, hex washer head	2
48	803298	SCREW, hex head	2	200	100527	WASHER	2
51	117284	GRILL, fan guard	1	201	15J513	TANK, reservoir	1
55	15D862	NUT, hand	2	202	101754	PLUG, pipe	1
56	154594	O-RING	1	203	120604	GASKET, reservoir	1
96	15E410	PULLEY, fan	1	204	15E476	BRACKET, retainer, motor	1
99	15F157	BRACKET, mounting, engine, GH130, 200 & 230	1	206	116919	FILTER	1
	15E583	BRACKET, mounting, engine, GH300	1	207	15E587	TUBE, suction	1
101▲	15K431	LABEL, GH130	1	208	154594	PACKING, o-ring	1
	15K433	LABEL, GH200	1	209	15J363	COVER, reservoir	1
	15K435	LABEL, GH230	1	211	156401	PACKING, o-ring	1
	15K437	LABEL, GH300	1	212	119426	SCREW	8
115	288261	RAIL, belt guard, assembly, GH130 & 200	1	214	120726	CAP, breather, filler	1
	288393	RAIL, belt guard, assembly, GH230 & 300	1	219	237686	WIRE, ground with clamp	1
117	288734	GUARD, belt assembly, painted, GH130 & 200	1	220	288733	PUMP, hydraulic, GH130	1
	248973	GUARD, belt, assembly, painted, GH230 & 300	1		246178	PUMP, hydraulic, GH200	
139▲	198492	LABEL	1		249003	PUMP, hydraulic, 230/300	
144▲	15K440	LABEL	1	221	110792	FITTING, elbow, male, 90°	1
148	115477	SCREW, mach, torx pan hd	4	222	15B438	KNOB, pressure	1
170	102040	NUT, lock, hex	1	223	117560	SCREW, set, socket head	1
172	119434	SCREW, shoulder, socket head	1	224▲	15A464	LABEL, control	1
173	116969	NUT, lock	1	225	246167	TUBE, hydraulic, case drain	1
				226	120634	FITTING, elbow, with o-rings	1
				277	117471	SCREW	4
				284▲	198585	LABEL	1
				287	120184	FITTING	1

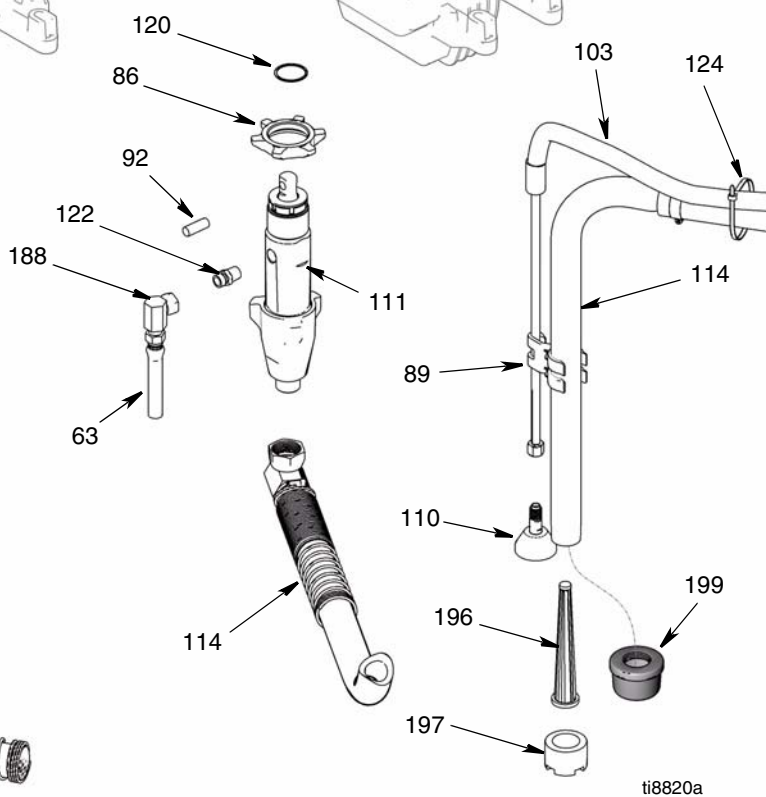
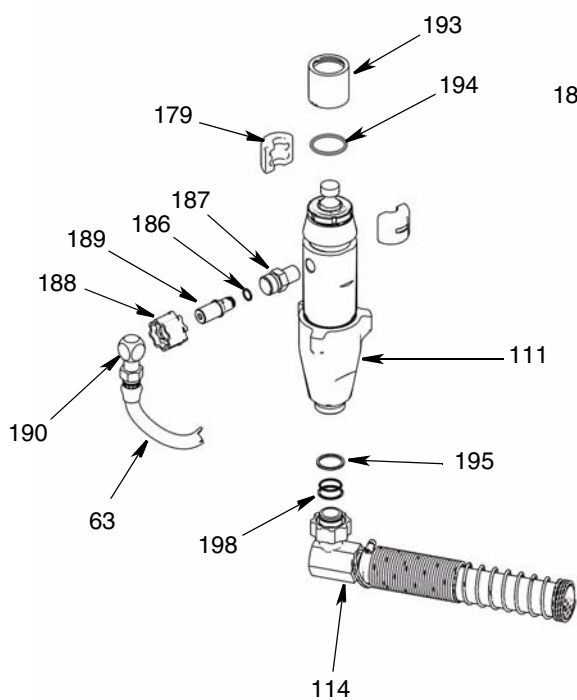
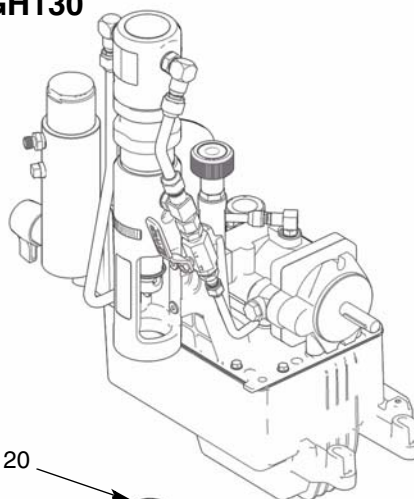
▲ Danger and Warning labels, are available at no cost.

Parts Drawing - All Sprayers

GH200/230/300



GH130

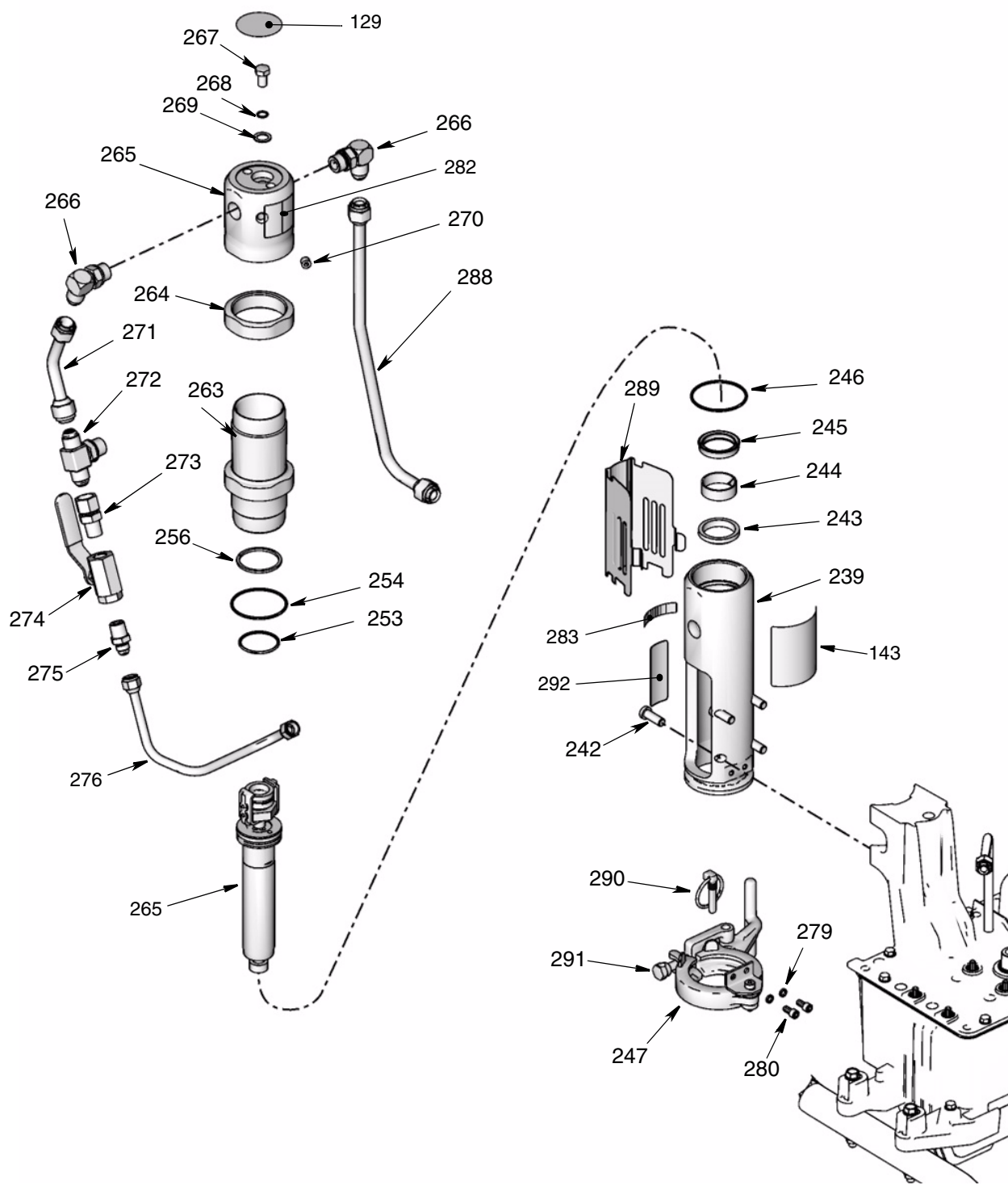


ti8820a

Parts List - All Sprayers

Ref	Part	Description	Qty				
63	243814	HOSE, coupled	1	179	277377	COUPLER	2
86	193031	NUT, retaining, GH130	1	186	107505	PACKING, o-ring	1
89	15D000	CLIP, drain line	1	187	15J413	FITTING, pump, QD	1
92	15J141	PIN, pump, GH130	1	188	120583	NUT, hand	1
103	288732	KIT, drain hose	1	189	15J410	FITTING, QD	1
110	241920	DEFLECTOR, threaded	1	190	155699	FITTING, elbow, street	1
111	288466	PUMP, kit, displacement, GH130	1	193	15H957	COVER, coupler	1
	288467	PUMP, kit, displacement, GH200	1	194	156698	PACKING, o-ring	1
	288468	PUMP, kit, displacement, GH230 & 300	1	195	119566	WASHER, garden hose	1
114	288251	HOSE,suction, GH130	1	196*	288472	INLET FILTER, 10 mesh, standard	1
	288252	HOSE,suction, GH200, 230 & 300	1		289131	INLET FILTER, 16 mesh	1
120	116551	RING, retaining, GH130	1	197*	288480	NUT, strainer, inlet	1
122	162485	ADAPTER, nipple, GH130	1	198	117559	O-RING	2
124	114958	STRAP, tie	4	199	189920	STRAINER	1
				* Included in Accessory Kit 288481 (10 mesh) or Accessory Kit 289132 (16 mesh)			

Parts Drawing - All Sprayers



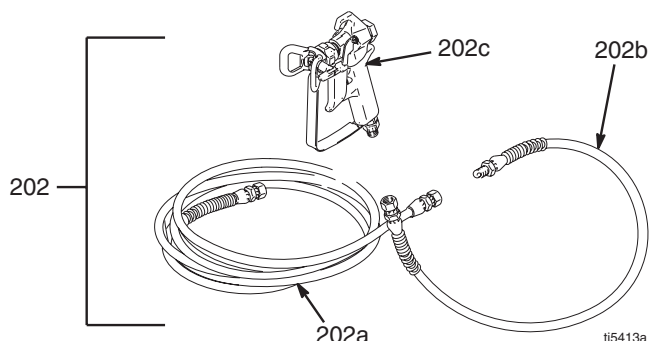
ti8824b

Parts List

Ref	Part	Description	Qty				
129▲◆✓	15B063	LABEL	1	272◆	15E596	TUBE, hydraulic, supply, GH230 & 300	1
143▲◆	15K430	LABEL, GH130	1	273	117609	FITTING, tee, branch, str thd	1
	15K432	LABEL, GH200	1	274	117328	FITTING, nipple, straight	1
	15K434	LABEL, GH230	1	275	117441	VALVE, ball	1
	15K436	LABEL, GH300	1	276	116813	FITTING, nipple, hydraulic	1
239◆	15H953	MANIFOLD, GH130	1		15J819	TUBE, hydraulic, supply, GH130	1
	15J278	MANIFOLD, GH200	1		15J846	TUBE, hydraulic, supply, GH200	1
	15J279	MANIFOLD, GH230 & 300	1		15J864	TUBE, hydraulic, supply, GH230, GH300	1
242◆	15B564	SCREW, cap socket	4	279	105510	WASHER, lock, spring (hi-collar)	2
243‡◆	117739	WIPER, rod	1	280	101550	SCREW, cap, sch	2
244‡◆	112342	BEARING, rod	1	282▲◆✓	15B804	LABEL	1
245‡◆	112561	PACKING, block	1	283▲◆	192840	LABEL	1
246‡◆	117283	PACKING, o-ring	2	288	15J824	TUBE, hydraulic, return, GH130	1
247	288344	CLAMP, pump; GH 200, 230, 300	1		15J845	TUBE, hydraulic, return, GH200	1
253‡◆✓	108014	PACKING, o-ring	1		15J863	TUBE, hydraulic, return, GH230 & 300	1
254‡◆✓	178226	SEAL, piston	1	289	15J503	SHIELD, rod, model 255095 only	1
256‡◆✓	178207	BEARING, piston	1	290	288741	KIT, repair, pin/spacer; GH 200, 230, 300	1
263◆	246176	SLEEVE, hydraulic cylinder, kit, GH130 & 200	1	291	15J417	BOLT, adjustment; GH 200, 230, 300	
	248991	SLEEVE, hydraulic cylinder, kit, GH230 & 300)	1	292◆	15F584	LABEL	1
264◆	15A726	NUT, jam	1	▲Danger and Warning labels, are available at no cost. ◆Included in Hydraulic Motor Repair Kit: 288758 - GH130; 288759 - GH200; 288760 - GH230 & 300 ✓ Included in Trip Rod/Piston Kit: 288735 - GH130; 288736 - GH200; 288737 - GH230 & 300 ‡ Included in Seal Kit 246174			
265◆	288735	KIT, repair, trip rod, piston; GH130 only	1				
	288736	KIT, repair, trip rod, piston; GH 200 only	1				
	288737	KIT, repair, trip rod, piston; GH 230/300 only	1				
266◆	117607	FITTING, elbow std thd	2				
267✓◆	106276	SCREW, cap, hex head	1				
268✓◆	155685	PACKING, o-ring	1				
269✓◆	178179	WASHER, sealing	1				
270✓◆	100139	PLUG, pipe	1				
271◆	198629	TUBE, hydraulic, supply, GH130 & 200	1				

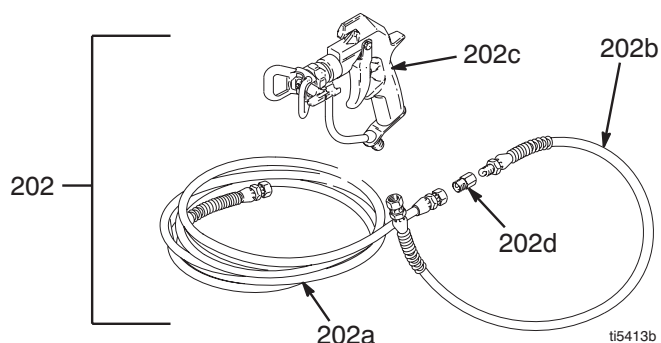
GH 130 & 200 Sprayers with Spray Gun and Hoses

Ref No.	Part No.	Description	Qty.
202	287036	KIT, gun, Contractor 3300 psi (227 bar, 22.7 MPa) Includes 202a - 202d	1
202a	243341	HOSE, grounded, nylon; 1/4 in. ID; cpld 1/4-18 npsm; 50 foot (15 m); spring guards both ends 3300 psi (227 bar, 22.7 MPa)	1
202b	277322	HOSE, grounded, nylon; 3/16 in. ID; cpld 1/4 npt(m) x 1/4 npsm(f); 3 foot (0.9 m); spring guards both ends 3300 psi (227 bar, 22.7 MPa)	1
202c	246220	Contractor Spray Gun Includes 517 RAC® X SwitchTip and HandTite™ Guard See 309639 for parts	1



GH 230 & 300 Sprayers with Spray Gun and Hoses

Ref No.	Part No.	Description	Qty.
202	287042	KIT, gun, Silver 3300 psi (227 bar, 22.7 MPa) Includes 202a - 202d	1
202a	240797	HOSE, grounded, nylon; 3/8 in. ID; cpld 3/8-18 npsm; 50 foot (15 m); spring guards both ends 3300 psi (227 bar, 22.7 MPa)	1
202b	277322	HOSE, grounded, nylon; 3/16 in. ID; cpld 1/4 npt(m) x 1/4 npsm(f); 3 foot (0.9 m); spring guards both ends 3300 psi (227 bar, 22.7 MPa)	1
202c	246240	Silver Spray Gun Includes 517 RAC® X SwitchTip and HandTite™ Guard See 309740 for parts	1
202d	159841	ADAPTER, 3/8 X 1/4 in. npt	1



Graco Standard Warranty

Graco warrants all equipment referenced in this document which is manufactured by Graco and bearing its name to be free from defects in material and workmanship on the date of sale to the original purchaser for use. With the exception of any special, extended, or limited warranty published by Graco, Graco will, for a period of twelve months from the date of sale, repair or replace any part of the equipment determined by Graco to be defective. This warranty applies only when the equipment is installed, operated and maintained in accordance with Graco's written recommendations.

This warranty does not cover, and Graco shall not be liable for general wear and tear, or any malfunction, damage or wear caused by faulty installation, misapplication, abrasion, corrosion, inadequate or improper maintenance, negligence, accident, tampering, or substitution of non-Graco component parts. Nor shall Graco be liable for malfunction, damage or wear caused by the incompatibility of Graco equipment with structures, accessories, equipment or materials not supplied by Graco, or the improper design, manufacture, installation, operation or maintenance of structures, accessories, equipment or materials not supplied by Graco.

This warranty is conditioned upon the prepaid return of the equipment claimed to be defective to an authorized Graco distributor for verification of the claimed defect. If the claimed defect is verified, Graco will repair or replace free of charge any defective parts. The equipment will be returned to the original purchaser transportation prepaid. If inspection of the equipment does not disclose any defect in material or workmanship, repairs will be made at a reasonable charge, which charges may include the costs of parts, labor, and transportation.

Graco's sole obligation and buyer's sole remedy for any breach of warranty shall be as set forth above. The buyer agrees that no other remedy (including, but not limited to, incidental or consequential damages for lost profits, lost sales, injury to person or property, or any other incidental or consequential loss) shall be available. Any action for breach of warranty must be brought within two (2) years of the date of sale.

GRACO MAKES NO WARRANTY, AND DISCLAIMS ALL IMPLIED WARRANTIES OF MERCHANTABILITY AND FITNESS FOR A PARTICULAR PURPOSE, IN CONNECTION WITH ACCESSORIES, EQUIPMENT, MATERIALS OR COMPONENTS SOLD BUT NOT MANUFACTURED BY GRACO. These items sold, but not manufactured by Graco (such as electric motors, switches, hose, etc.), are subject to the warranty, if any, of their manufacturer. Graco will provide purchaser with reasonable assistance in making any claim for breach of these warranties.

In no event will Graco be liable for indirect, incidental, special or consequential damages resulting from Graco supplying equipment hereunder, or the furnishing, performance, or use of any products or other goods sold hereto, whether due to a breach of contract, breach of warranty, the negligence of Graco, or otherwise.

FOR GRACO CANADA CUSTOMERS

The Parties acknowledge that they have required that the present document, as well as all documents, notices and legal proceedings entered into, given or instituted pursuant hereto or relating directly or indirectly hereto, be drawn up in English. Les parties reconnaissent avoir convenu que la rédaction du présente document sera en Anglais, ainsi que tous documents, avis et procédures judiciaires exécutés, donnés ou intentés, à la suite de ou en rapport, directement ou indirectement, avec les procédures concernées.

ADDITIONAL WARRANTY COVERAGE

Graco does provide extended warranty and wear warranty for products described in the Graco Contractor Equipment Warranty Program.

TO PLACE AN ORDER, contact your Graco distributor, or call **1-800-690-2894** to identify the nearest distributor.

All written and visual data contained in this document reflects the latest product information available at the time of publication.

Graco reserves the right to make changes at any time without notice.

This manual contains English. MM 311797

Graco Headquarters: Minneapolis
International Offices: Belgium, China, Japan, Korea

GRACO INC. P.O. BOX 1441 MINNEAPOLIS, MN 55440-1441

www.graco.com

10/2008